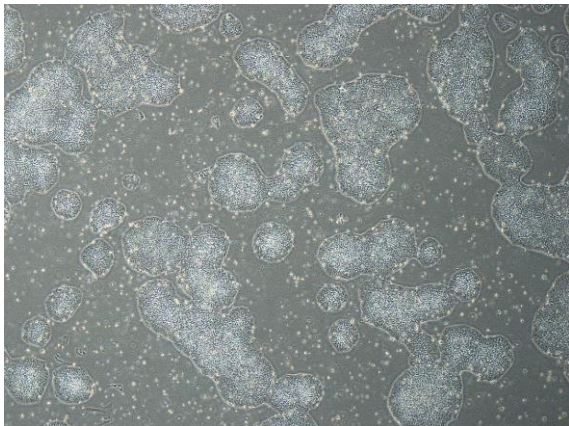
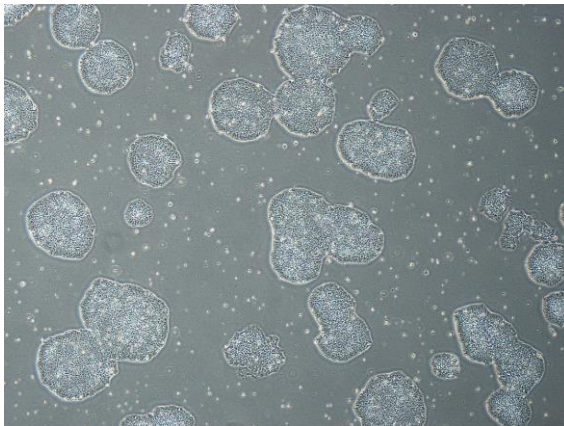


【 CiRA-j-1138 】 Morphology of iPSC colonies

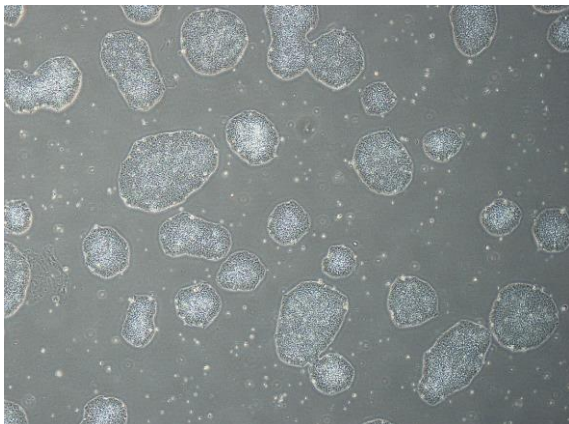
CiRA-j-1138-A: passage-3



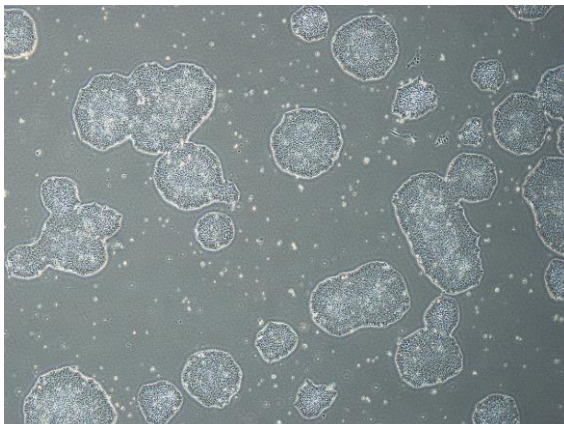
CiRA-j-1138-B: passage-3



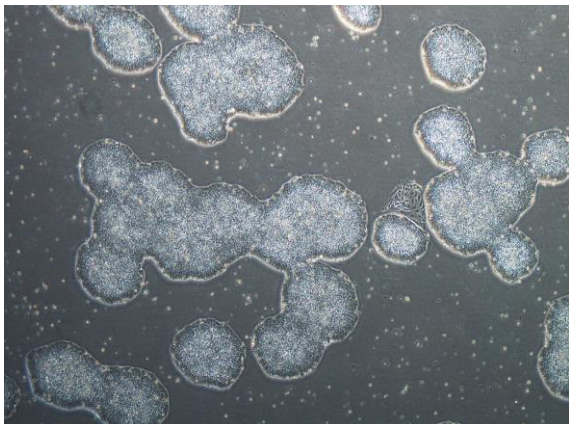
CiRA-j-1138-C: passage-3



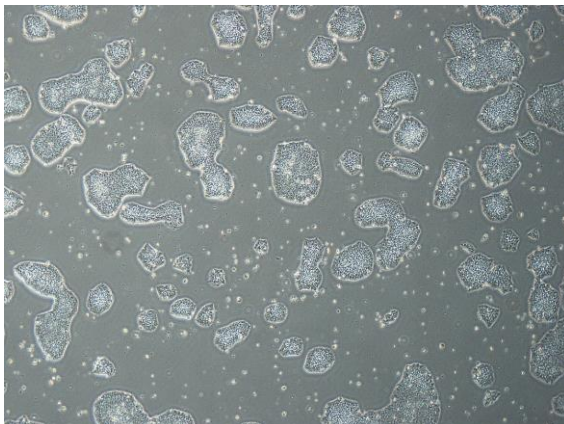
CiRA-j-1138-D: passage-3



CiRA-j-1138-E: passage-3



CiRA-j-1138-F: passage-3



(All images were captured at 4x magnification)